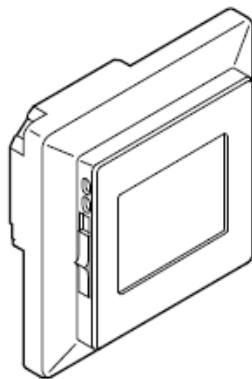
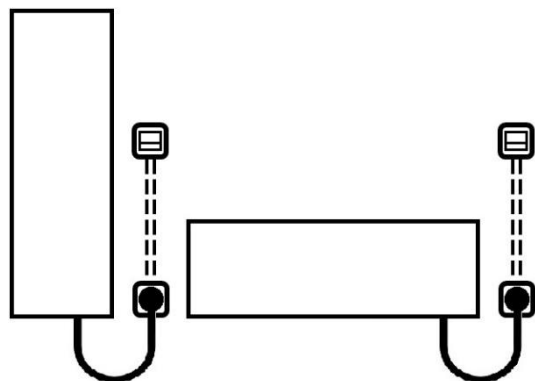


Instamat



Manual EL.BEDIENING.20*, -.21* en -.22*



**) This manual is only for use with the thermostat with an electric radiator from Instamat.
For use with underfloor heating, you will find the manual elsewhere in the packaging.
An electric radiator and underfloor heating cannot be used together on one thermostat. If this is applicable in the room, two thermostats are required.*

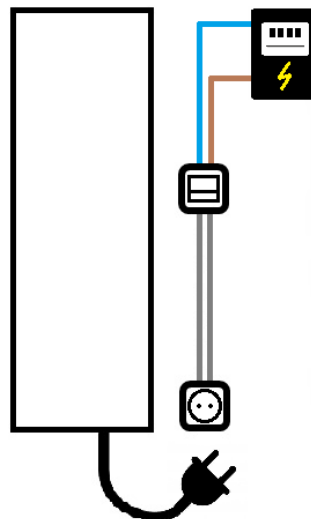
Technical specifications	
Product	Digital thermostat
IP-code	IP21
Power	230 V / 50 Hz
Warranty	2 jaar
Approval mark	CE

WARNING: Read the instructions carefully before use and keep this manual for future reference.

- Installation must be carried out by qualified personnel in accordance with legal regulations (where required by law).
- Installation must be carried out in accordance with national and/or local electrical codes.
- This manual is a supplement to the standard factory manual packaged with the thermostat.

ALWAYS TURN OFF THE ELECTRICITY BEFORE INSTALLING THE THERMOSTAT!

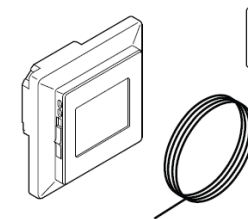
Schematic representation



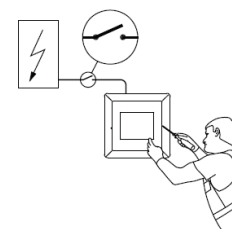
Create a situation where the contact point for the electric radiator (e.g. socket) has a direct connection to the mounting box where the thermostat will be installed. From this mounting box follows the connection to the power.
The thermostat must be mounted in the same room as the radiator, approx. 1.5 m above the floor to ensure free air circulation.

Installation thermostat

- Package contents;
- Thermostat
 - Sensor*
 - Extensive manual**

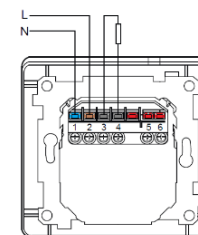
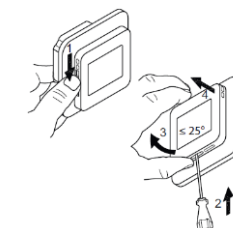


*) When installing for a n Instamat electric radiator, the sensor must **NOT** be connected.



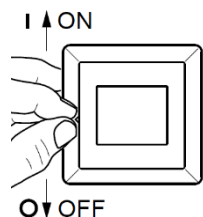
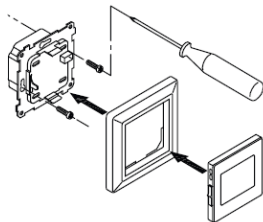
Switch off the electricity before carrying out any work on this thermostat and associated radiator.

- Open the thermostat by setting the slide button (left on front) to 'off'.
- Insert a screwdriver into only the slot in the middle of the bottom of the front.
- Carefull pull the front away, fist the bottom



- Connect the wires. The wires should be connected as follows;
 - o Terminal 1 = Neutral (N)
 - o Terminal 2 = Phase (L)
 - o Terminal 3 & 4 = Outgoing
 - o Terminal X = do not connect
 - o Terminal 5 & 6 = not applicable for installation for electric radiator

- Mount the thermostat in the wall box.
- Fit the frame. Then carefully place the front on top. First the top part en then the bottom. Make sure the slide button of the front is set to 'off'.



- Make sure the radiator is connected to the thermostat via the 'created situation'.
- Switch back on the electricity and set the thermostat slide button to 'on'.
- For the next steps, go to the construction setting of the delivered model.

**.) The thermostat packaging contains a comprehensive manual. This manual describes the various options and possibilities of the thermostat.

For use (construction settings) with an Instamat electric radiator, this Instamat manual for installation and maintenance must be read.

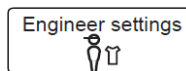
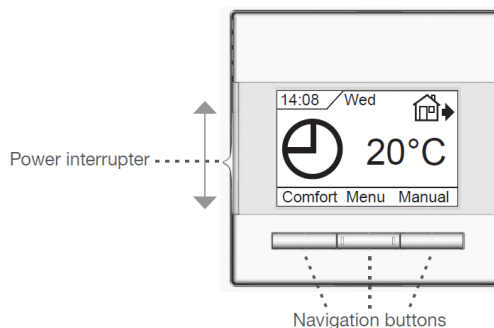
The other standard and user settings are described in this comprehensive manual.



DISPOSAL: This product may NOT be treated as ordinary household waste. It has to be disposed of at proper waste collection sites

INSTAMAT WARMTECHNIEK BV
 Spinfondsweg 15, 8171 NT Vaassen
 Mail: info@instamat.nl – Website: instamat.nl

Construction setting EL.BEDIENING.20



Room reg.



- The first time you switch the interrupter ON, language, time and date must be set. The menu will guide you automatically through the process.

- Press the middle button to open the main menu.

- Navigate to **Engineer settings** and select with the middle button to open the menu.

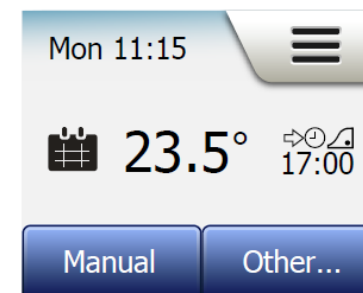
- Now navigate to **application** and select with the middle button to open

- Select the application **Room reg.** and confirm with the middle button. After confirmation you will return to the previous menu

- Navigate to 'Exit' and confirm to close all menu's.

The thermostat is now set correctly for the electric radiator. User settings such as temperature and weekly schedule can be set using the extended manual

Construction setting EL.BEDIENING.21 en -.22



- The first time you switch the interrupter ON, language, time and date must be set. The menu will guide you automatically through the process.

- Open the main menu pressing the "Menu" button on the home screen.

- Navigate to **Engineer Settings** and select on the screen.

- Tap the **Sensor Application** and select on the screen

- Confirm that you want to set the Sensor Application.

- Tap the application **Room** on the screen and confirm (✓)

- Navigate back the the homescreen.

The thermostat is now set correctly for the electric radiator. User settings such as temperature and weekly schedule can be set using the extended manual